

2020-22

Research

This infographic presents research carried out in 2020 - 22

As EMCC UK members we have access via the EMCC UK website. Here you will find many more titles

Go to Research (emccuk.org)

1 Supervision

Lawton Smith, C; (2021)

ABCD Map: A personal construct approach to coaching supervision

International Journal of Evidence Based Coaching and Mentoring 2021, Vol. 19(1), pp.61-73.

Wingrove, A; Lai, Y; Palmer, S; Williams, S; (2020)

Self-determination theory: A theoretical framework for group supervision with internal coaches

International Journal of Evidence Based Coaching and Mentoring 2020, Vol. 18(2), pp.183-196.



Coaching 2

Coller-Peter, S; Adrianna de Vries, D; (2022)

Towards building theory on coachee readiness

International Journal of Evidence Based Coaching and Mentoring 2022, Vol. 20, pp.50-65.

Sutton, A; Crobach, C; (2022)

Improving self-awareness and engagement through group coaching

International Journal of Evidence Based Coaching and Mentoring 2022, Vol. 20(1), pp.35-49

3

Mentoring

Thompson, R; (2021)

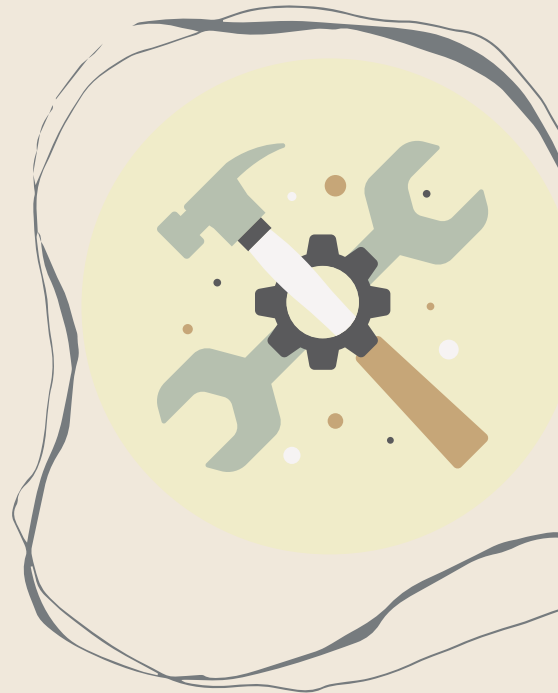
Coaching and Mentoring with Metaphor

International Journal of Evidence Based Coaching and Mentoring 2021, S15, pp.212-228

Hieker, C; Rushby, H; (2020)

Reflections from the Field Key Success Factors in Implementing Sustainable Mentor Programmes in Large Organisations

International Journal of Evidence Based Coaching and Mentoring 2020, Vol. 18(2), pp.197-208.



Sources